

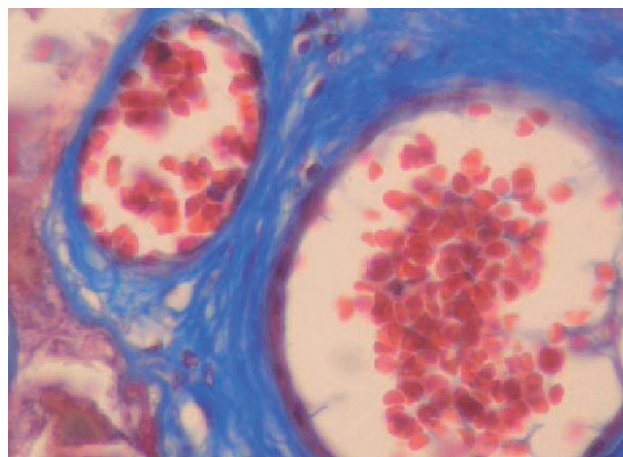
## Masson's Trichrome Kit for clinical diagnosis

Masson's Trichrome kit is indicated for staining connective tissue. It stains gametes, nuclei, nerve fibres, neuroglia, collagen, keratin and intracellular fibres. It can also be used to obtain a negative image of the Golgi apparatus.

Collagen fibres are the most common elements found in connective tissue. They play a basic support role and are synthesized by numerous cell elements in the organism, including fibroblasts.

### Masson's trichrome stain with aniline blue contains four different dyes:

- Weigert's iron hematoxylin for the nucleus.
- Picric acid for the erythrocytes.
- A mixture of acid dyes for the cytoplasm.
- Aniline blue for the connective tissue.



### Main advantages

- All reagents used during staining are ready for use.
- Supplied in easy-to-use 30 ml dropper bottles.
- Optimal sample staining.
- Sufficient quantity to perform up to 100 tests.
- No additional equipment required.



Meets the requirements of the CE marking for in vitro diagnostic medical devices. See instructions on [www.itwreagents.com](http://www.itwreagents.com).

### Contents of the kit

<b>Reagent A:</b> Hematoxylin sol. B (Weigert) .....	30 ml
<b>Reagent B:</b> Hematoxylin sol. A (Weigert) .....	30 ml
<b>Reagent C:</b> Picric acid alcoholic sol .....	30 ml
<b>Reagent D:</b> Biebrich Scarlet sol .....	30 ml
<b>Reagent E:</b> Phosphomolybdic acid sol .....	30 ml
<b>Reagent F:</b> Aniline blue sol .....	30 ml

Sufficient for 100 tests.

### Stability and storage

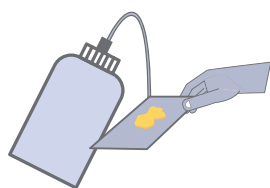
The kit is stable for 10 months.  
Store the product at between +15 and + 25 °C.



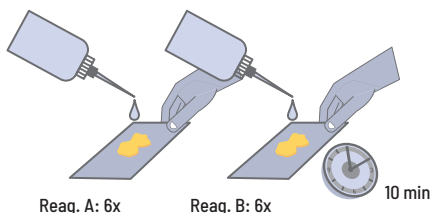


IP-052EN;201901

## Procedure

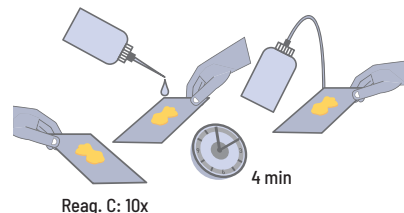


- 1** Deparaffinize and hydrate the histological section to distilled water.



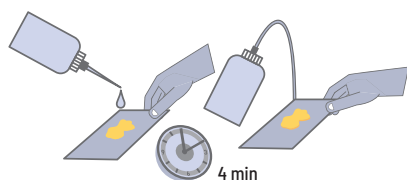
Reag. A: 6x      Reag. B: 6x      10 min

- 2** Add 6 drops of Reagent A to the preparation. Add 6 drops of Reagent B. Allow to react for 10 minutes.



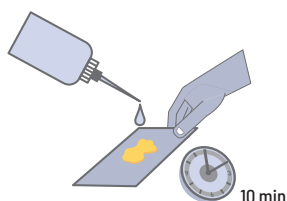
Reag. C: 10x

- 3** Without washing, drain the preparation and add 10 drops of Reagent C. Allow to react for 4 minutes. Rinse rapidly (3-4 seconds) in distilled water.



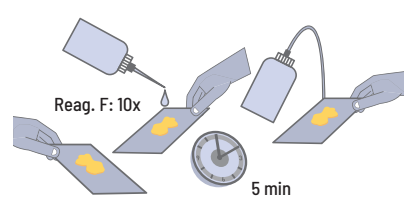
Reag. D: 10x

- 4** Add 10 drops of Reagent D. Allow to react for 4 minutes. Rinse in distilled water.



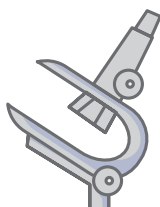
Reag. E: 10x

- 5** Add 10 drops of Reagent E. Allow to react for 10 minutes.



Reag. F: 10x

- 6** Without washing, drain the preparation and add 10 drops of Reagent F. Allow to react for 5 minutes. Rinse in distilled water.



- 7** Dehydrate using an increasing series of alcohols. Immerse in absolute alcohol for 1 minute. Rinse with xylene, mount and observe under the microscope.

## Results

Nuclei and gamets	Black
Cytoplasm, keratin, muscle fibers, acidophilic granulations	Red
Collagen, mucus, basophilic pituitary granulations	Blue
Hypophysis delta cell granules	Blue-violet
Erythrocytes	Yellow

Description	Code	Package
Masson's Trichrome Kit for clinical diagnosis	256692.0922	Kit



A wide range of histology reagents are available.  
For more information see our brochure "Reagents for Hospitals" at  
[https://www.itwreagents.com/download\\_file/brochures/A193/en/A193\\_en.pdf](https://www.itwreagents.com/download_file/brochures/A193/en/A193_en.pdf)

IP-052EN

**AppliChem GmbH**  
Ottoweg 4  
DE-64291 Darmstadt  
Germany  
Phone +49 6151 9357 0  
Fax +49 6151 9357 11  
[info.de@itwreagents.com](mailto:info.de@itwreagents.com)

**Nova Chimica Srl**  
Via G. Galilei, 47  
I-20092 Cinisello Balsamo  
(Milano) Italy  
Phone +39 02 66045392  
Fax +39 02 66045394  
[info.it@itwreagents.com](mailto:info.it@itwreagents.com)

**PanReac Química SLU**  
C/ Garraf 2, Polígono Pla de la  
Bruguera  
E-08211 Castellar del Vallès  
(Barcelona) Spain  
Phone +34 937 489 400  
Fax +34 937 489 401  
[info.es@itwreagents.com](mailto:info.es@itwreagents.com)


[www.itwreagents.com](http://www.itwreagents.com)