



Histofix® Preservative ready-to-use for clinical diagnostics

3.7-4.0% Formaldehyde solution indicated for use as a preservative/fixative in pathological anatomy.

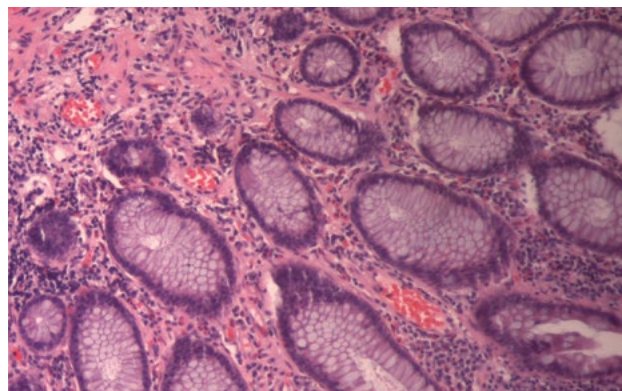
Available in polypropylene bottles of various sizes, with pre-dosed formaldehyde for rapid, convenient use to avoid the need for bothersome preliminary preparations.

Neutral solution, buffered with sodium phosphate at pH 7 and stabilized with methanol, to prevent potential oxidation phenomena and enhance preservation of the sample to be processed.

Perfect, air-tight seal to ensure high sample stability, plus a grooved base to facilitate handling with gloves and prevent accidental slipping.

Also available in **pink colored** formalin for better visualization of small specimens

Compliance with CE marking requirements for health products used for in vitro diagnostics.



Main advantages

- **Convenience:** Transparent bottle containing Histofix® Preservative ready-to-use. The label includes all required information about the product.
- **Safety:** No manipulation is required, eliminating any problems associated with product toxicity. Any spillage is avoided owing to the excellent hermetic design of the containers.
- **Quality:** The high quality and stability of our formaldehyde enables effective and reproducible fixation.
- **A wide-range of formats:** Available in different sizes, thus allowing users to select the most suitable size for their samples.

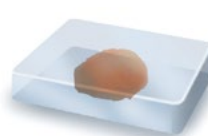
1 Fixation



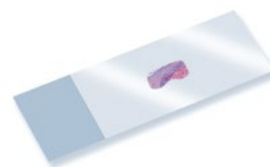
2 Dehydration/
Clearing



3 Infiltration/
Paraffin Embedding



7 Mounting



4 Sectioning



5 Paraffin removal/
Hydration



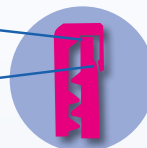
6 Staining





Secondary seal

Primary seal



Double internal security closure

The double-lock safety cap guarantees airtight sealing of the sample













The bottles have a grooved twist-off cap for easier opening and closing



The upper part of the container is specially designed to facilitate pouring and prevent dripping on the outside



The bottles have moulded graduation marks every 10 mL

| Product code | Formol quantity (mL) * | Units / box | Container information | | | | Container picture |
|-----------------------------------|------------------------|-------------|-----------------------|-------------------|----------------|----------------------|---|
| | | | Graduated volume (mL) | Total volume (mL) | Ø opening (mm) | Height with cap (mm) | |
| 256462.0905 257462.0905 (pink) | 10 | 45 | 20 | 25 | 34 | 43 |  |
| 256462.0955 | 20 | 44 | 40 | 50 | 45 | 43 |  |
| 256462.0962 257462.0962 (pink) | 30 | 45 | 60 | 76 | 45 | 60 |  |
| 256462.0961 257462.0961 (pink) | 40 | 45 | 60 | 76 | 45 | 60 |  |
| 256462.0967 | 75 | 24 | 120 | 146 | 53 | 78 |  |
| 256462.0943 | 125 | 16 | 150 | 250 | 89 | 57 |  |
| 256462.0944 | 200 | 12 | 350 | 500 | 90 | 110 |  |
| 256462.09149 | 600 | 10 | — | 1200 | 125 | 126 |  |
| 256462.09118 | 1500 | 4 | — | 3100 | 190 | 138 |  |
| 256462.09150 | 3000 | 4 | — | 5300 | 210 | 183 |  |

IP-011EN

